

Wansford Parish Council

Deadline 4 Submission

ISH2 Agenda Item 3

The Scheduled Monument

A47 Wansford to Sutton Dualling

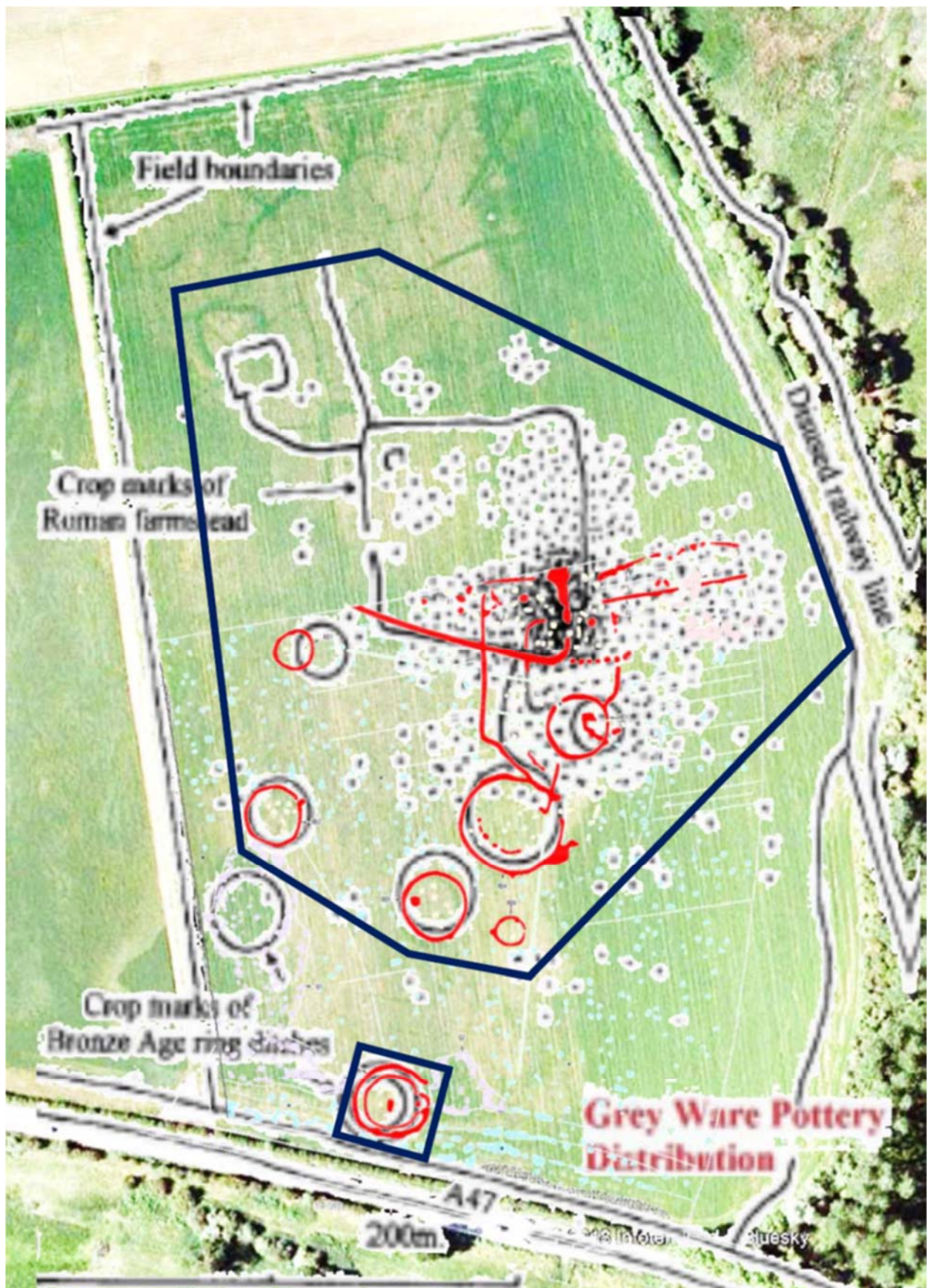
In Issue Specific Hearing 2, Historic England continued to oppose the option of the A47 taking a route between the southern feature and the rest of the Scheduled Monument.

Historic England were unable to describe why such a route would damage the Scheduled Monument, their only argument being that it would damage the “landscape” of the monument. As before, they did not provide a definition of what they meant by landscape in this context. The repeated use of this term without any definition points to it simply being jargon with no real meaning.

Historic England expressed concern that the proximity of the new road to the southern feature of the monument would risk damaging it. Using the route between the features of the monument, gives a much greater clearance to all features than the current alignment.

Historic England made several references to the shape of the scheduled monument following the contours of the land and the monument occupying a promontory at the end of the elevated area to the west of the site. When you examine the features of the site as shown in the Wansford Parish Council document submitted at Deadline 2, and copied below, it is clear that this is not correct. Following the contour line, as Historic England have tried to do, actually excludes an area of likely high interest from the Scheduled Monument at its eastern edge.

In a meeting with the parish councils, Historic England stated that they relied on the analysis done by Wansford Parish Council when reviewing the Scheduled Monument. As the attached diagram was a key part of that analysis, they presumably do not dispute the features shown.



Note that the original mapping of the Scheduled Monument included an extra ring which was disproved by the geophysical survey.